

# 60. Iivesjahti 2024



<b>Oil Pattern Distance:</b>	<b>37 Feet</b>	<b>Reverse Brush Drop:</b>	<b>37 Feet</b>	<b>Oil Per Board:</b>	<b>40 uL</b>
<b>Forward Oil Total:</b>	<b>14.16 mL</b>	<b>Reverse Oil Total:</b>	<b>9.08 mL</b>	<b>Volume Oil Total:</b>	<b>23.24 mL</b>
<b>Forward Boards Crossed:</b>	<b>354 Boards</b>	<b>Reverse Boards Crossed:</b>	<b>227 Boards</b>	<b>Total Boards Crossed:</b>	<b>581 Boards</b>

	Start	Stop	Loads	Speed	Crossed	Start	End	Feet	T.Oil
1	2L	2R	2	10	74	0.0	2.0	2.0	2960
2	6L	6R	2	10	58	2.0	4.0	2.0	2320
3	7L	7R	2	10	54	4.0	6.0	2.0	2160
4	8L	8R	2	10	50	6.0	8.0	2.0	2000
5	9L	9R	2	10	46	8.0	10.0	2.0	1840
6	10L	10R	1	10	21	10.0	11.0	1.0	840
7	11L	11R	1	10	19	11.0	12.0	1.0	760
8	12L	12R	1	10	17	12.0	13.0	1.0	680
9	13L	13R	1	10	15	13.0	14.0	1.0	600
10	2L	2R	0	18	0	14.0	29.0	15.0	0
11	2L	2R	0	30	0	29.0	37.0	8.0	0

Conditioner:  
Type In or Select One

TransferType:  
Type In or Select One

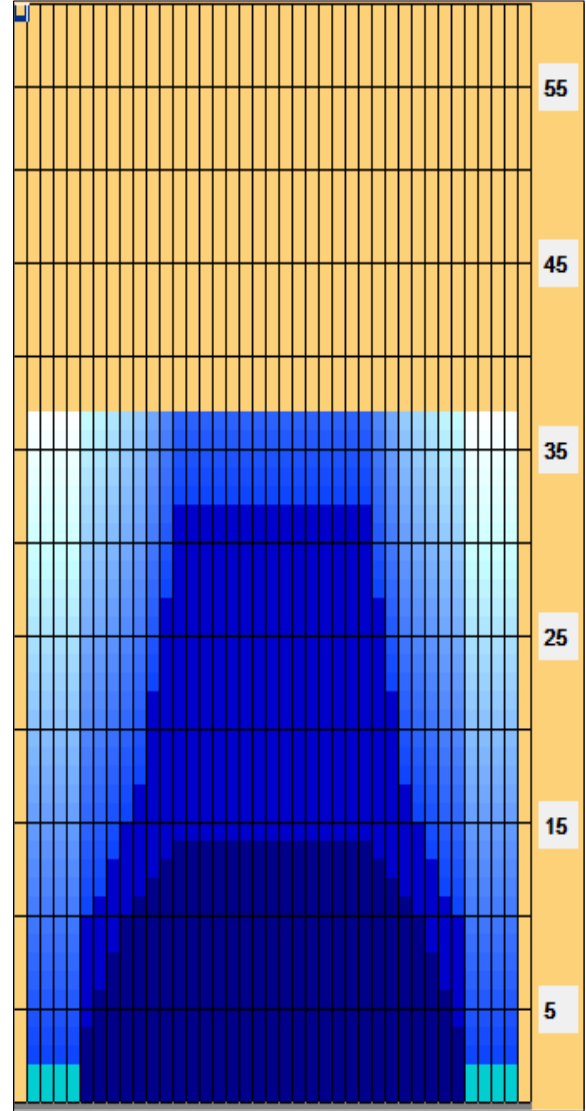
Forward

Reverse

Combined

Buff

	Start	Stop	Loads	Speed	Crossed	Start	End	Feet	T.Oil
1	2L	2R	0	30	0	37.0	32.0	-5.0	0
2	13L	13R	2	18	30	32.0	27.0	-5.0	1200
3	12L	12R	2	18	34	27.0	22.0	-5.0	1360
4	11L	11R	2	18	38	22.0	17.0	-5.0	1520
5	10L	10R	1	18	21	17.0	15.0	-2.0	840
6	9L	9R	1	18	23	15.0	13.0	-2.0	920
7	8L	8R	1	18	25	13.0	11.0	-2.0	1000
8	7L	7R	1	14	27	11.0	10.0	-1.0	1080
9	6L	6R	1	14	29	10.0	9.0	-1.0	1160
10	2L	2R	0	10	0	9.0	0.0	-9.0	0



This Pattern Up Loaded From Slot # 3 In Lane Machine On 27.10.2017 12:20

Item	3L-7L:18L-18R	8L-12L:18L-18R	13L-17L:18L-18R	18L-18R:17R-13R	18L-18R:12R-8R	18L-18R:7R-3R
Description	Outside Track:Middle	Middle Track:Middle	Inside Track:Middle	Middle: Inside Track	Middle:Middle Track	Middle:Outside Track
Track Zone Ratio	6.58	1.52	1	1	1.52	6.58

